

## Our know-how - your advantage

In this high-quality sash assembly unit, proven URBAN machining stations have been combined: BMT 2500 (pre-assembly station), FBA 2500/4 (4-axis automatic screwing unit), FBA 2500/4-E (4-axis automatic screwing unit with electric screwing motors) and ST 1600 S (tilting table for sash outfeed).

So we can offer you a unit working on a fast and neutral basis in view of fittings that will meet your production requirements in an individual and cost-efficient way due to its modular design. The station impresses with extremely short cycle times (from 45 seconds\*), flexibility and high machining quality (\*depending on fitting, profile and operating speed).

### BMT 2500 - Pre-assembly station

- inserting and selecting of fittings through PC operator guidance
- individual extension levels
- gear cropper for cutting long parts with PC controlled length stop
- storing compartments for fittings

### Optional

- corner bracket drilling unit with automatic drilling cycle including 2-spindle drilling head
- barcode hand-held scanner (manual) or barcode laser scanner (automatic)

### FBA 2500/4 - 4-axis automatic screwing unit

- individual working method of 4 screwing units with AC servo-axes
- automatic adaptation of the screwing units to different screwing heights and depths
- non-profile specific clamping and stop system
- process monitoring of the unit with optical display at malfunctions
- industrial PC with TFT colour monitor
- gentle sash transport via flat belts

### Optional

- different screw lengths through additional feeding devices
- stops for overlap profiles

- Y-stop, e.g. for pre-assembled rotary hinges
- automatic stay arm locking device

### FBA 2500/4-E - 4-axis automatic screwing unit with e-screwing motors

Version as above, however with electric screwing motors.

### ST 1600 S Tilting table for sash outfeed

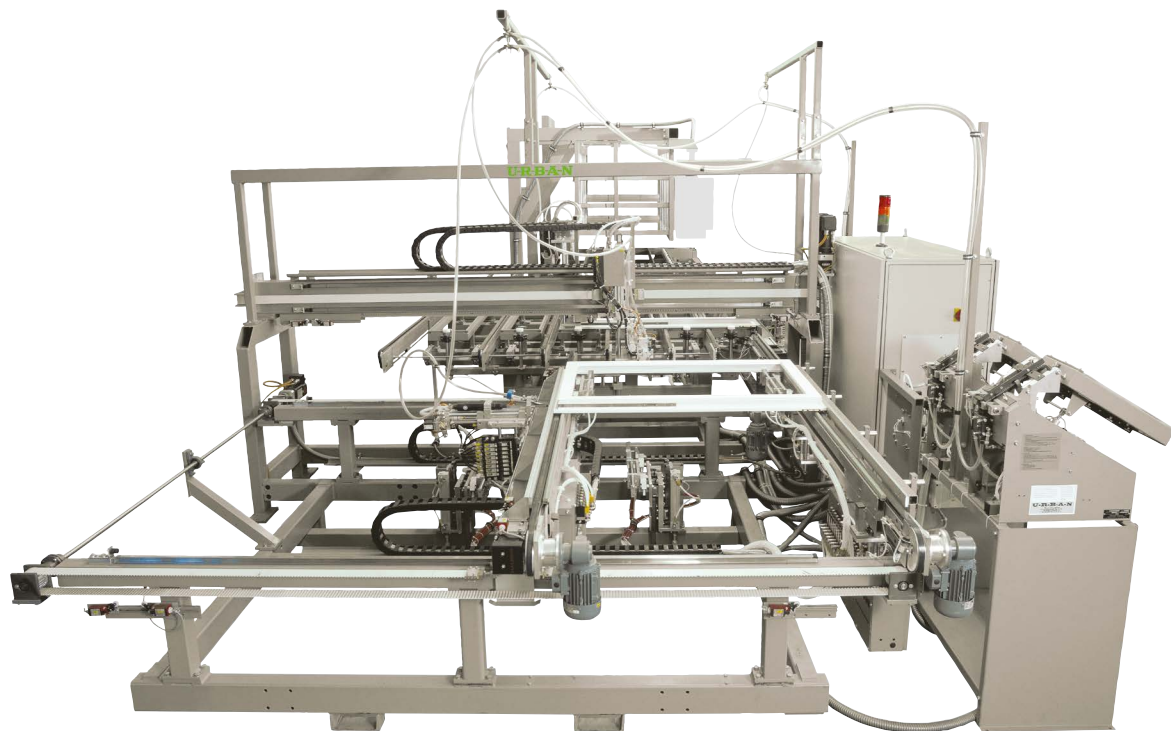
Automatic vertical positioning of sashes (stay arm always on top) with outfeed into customized sash distribution station.

### Optional

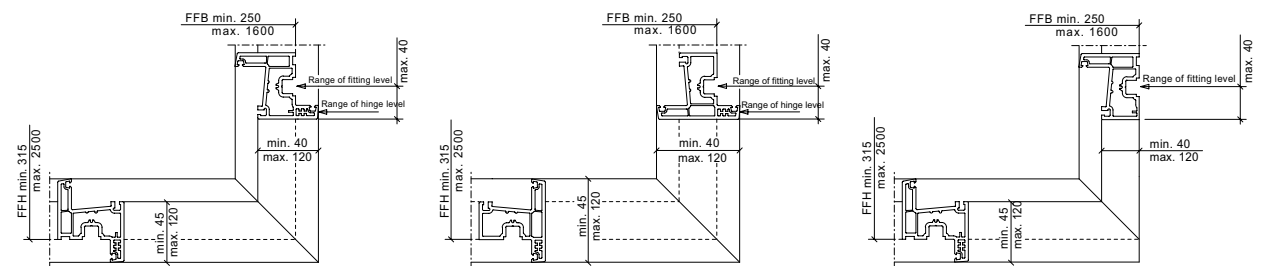
- Destacking into compartments (number of compartments freely selectable)
- Logistics administration
- Frame scanner with display and indication of the appertaining sash




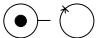
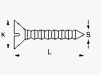
## FBA 2500/4, FBA 2500/4-E

### Sash Assembly Station



## Technical information



|  | FBA 2500  | FBA 2500-E  | BMT 2500                            |
|--|---|---|-------------------------------------|
|  kg | 2950 kgs  | 2950 kgs  | 1115 kgs                            |
|     | 230 / 400 V<br>L1-L2-L3-N-PE<br>7,5 kW, 14,6 A                        | 230 / 400 V<br>L1-L2-L3-N-PE<br>7,0 kW, 14,0 A                        | ---                                 |
|     | 2 x 8 mm<br>nominal width<br>min. 7 bar                               | 2 x 8 mm<br>nominal width<br>min. 7 bar                               | 8 mm<br>nominal width<br>min. 7 bar |
|     | max. 36 l/sec.  | 51 litres<br>per cycle  | 8 litres<br>per cycle               |
|     | S = 3,5 - 4,8 mm<br>K = 7,0 - 10 mm<br>L = 20 - 35 mm<br>U/min = 1700 | S = 3,5 - 4,8 mm<br>K = 7,0 - 10 mm<br>L = 20 - 35 mm<br>U/min = 1700 | ---                                 |

Technical data are valid for basic machine without options. Size according to layout.

### Urban GmbH & Co. Maschinenbau KG

Dornierstraße 5  
DE - 87700 Memmingen  
Tel.: +49 (0) 8331 858 - 0  
E-Mail: urban@u-r-b-a-n.com  
www.u-r-b-a-n.com

Product data sheet  
FBA 2500/4, FBA 2500/4-E  
01/22 PR60062

# FBA 2500/4, FBA 2500/4-E

Sash Assembly Station

**U-R-B-A-N**

Trust. Right from the start!

## Adaptability

Neutral working of the unit in view of fittings and profiles offers best possible freedom of decision making and flexibility.

## Quality reliability

The automatic error identification (screwing process) detects faulty elements which do not correspond to the quality standards. Optionally you have the possibility to unload these elements via roller conveyor\*.

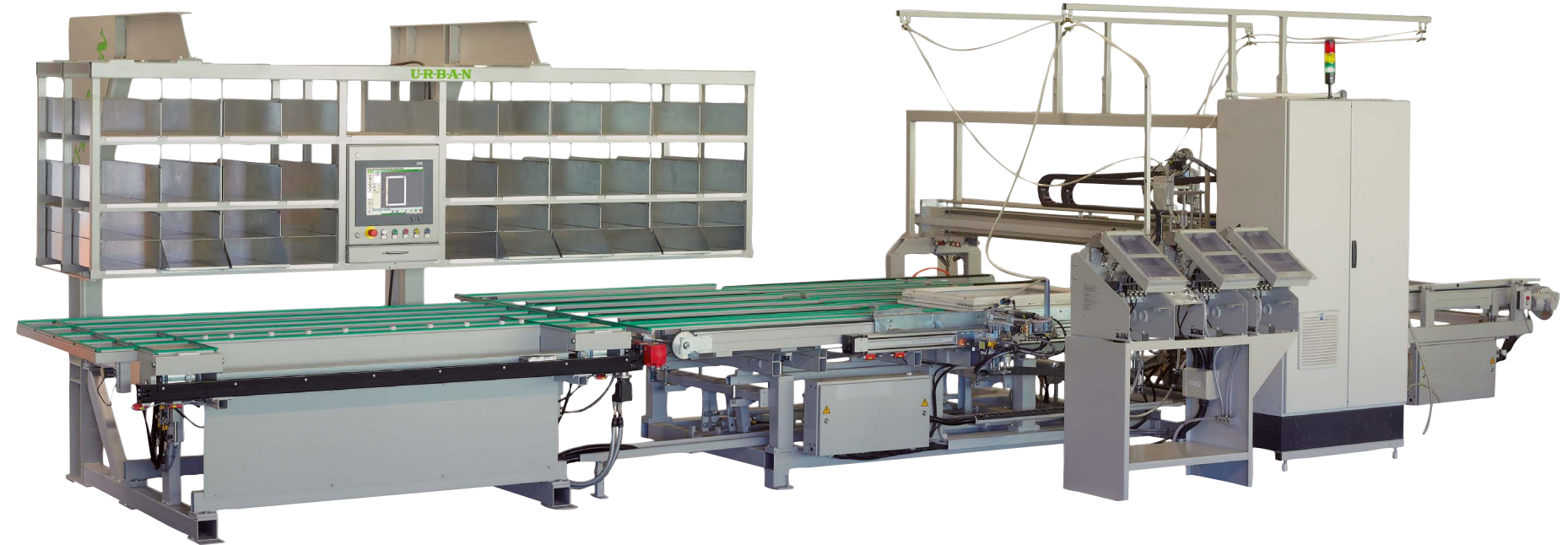
## Throughput times

The four independent screwing units are the basis for an efficient screwing of fitting and sash. So you can avoid fussy turning of the elements resulting in short cycling times.

## Absolute flexibility

Different feeding devices\* are available for various screws. Through deflection adjustment, several screw types can be processed in one screwing device.

Processing  
in a new  
dimension



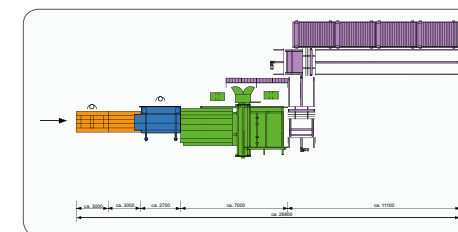
### Sophisticated solutions

Tilt stays that have to remain open during the screwing process are automatically closed\* before destacking. Thus, a smooth production flow is ensured for different fitting versions.



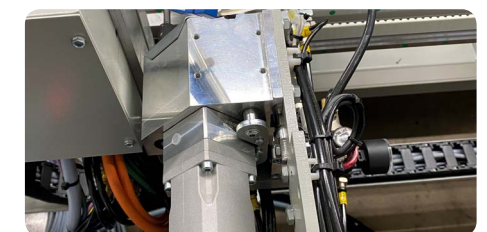
### Operator friendly handling

The IPC control\* with clearly arranged operator guidance and TFT colour monitor allows for optimal monitoring of the machining process through visualization of fittings and optical display in case of malfunctions.



### Time saving logistics

Automatic destacking\* of sashes as well as logistics for sash/frame allocation help saving precious production time; no matter if crosswise or lengthwise destacking of sashes is involved towards throughput direction.



### Optimal adaptation

Electric screwing motors with electronic control are the best pre-condition for the screwing process of different materials requiring different torques.

\*optionally available